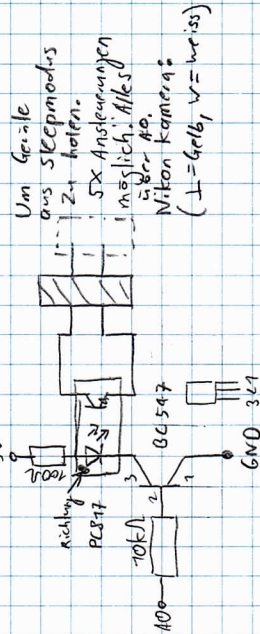
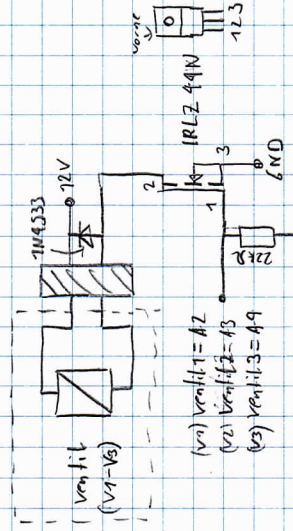
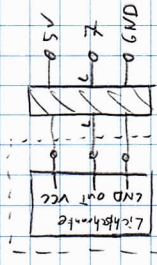
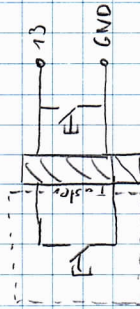
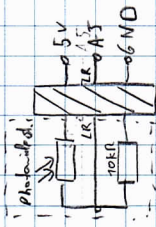
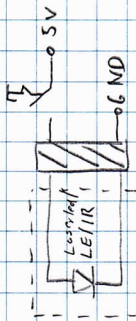
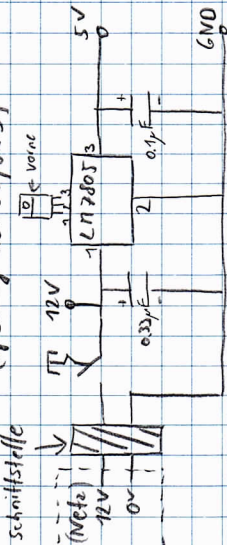
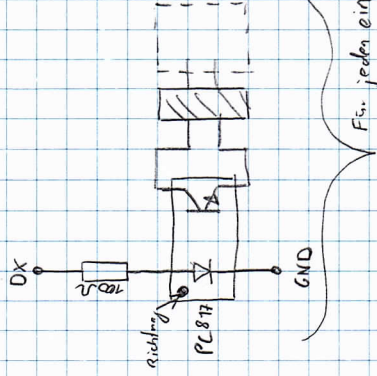
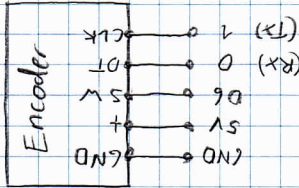
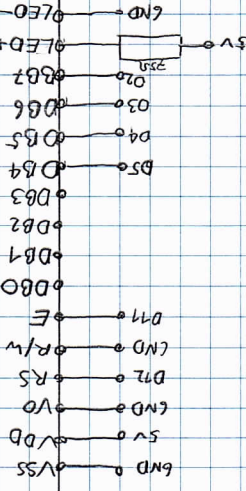


Kamera-Blitz Steuerung

Prozessor: Arduino Micro  
(Speisung über 5V/GND)



4x16 LCD



- 1x Kamera (A8, T = Gelb, B1 = Rot)
- 1x Nikon Blitz1 (A9, T = Schirm, B2 = Blau)
- 1x Nikon Blitz2 (A10, T = Schirm, B2 = Blau)
- 1x Canon Blitz3 (A0, T = Schirm, B2 = Schwarz)
- 1x Reversive (T = -, B2 = -)